

# 14RD | GOOSENECK ROLL-OFF DUMP TRAILER

📏 GVWR: 15,900# 📦 EMPTY WEIGHT: 6,040# 📏 AVAILABLE LENGTHS: 14' 📏 BED WIDTH: 102" WIDE 📌 COUPLER: Gooseneck with 2-5/16" Adjustable Pipe Coupler

## BigTex TRAILERS®

www.bigtextrailers.com/dump-trailers

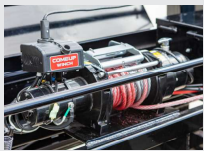
**14RD | GOOSENECK ROLL-OFF DUMP TRAILER**  
15,900# GVWR

**14RB | BUMPER PULL ROLL-OFF DUMP TRAILER**  
14,000# GVWR

**16RD | GOOSENECK ROLL-OFF DUMP TRAILER**  
17,500# GVWR

**16RB | BUMPER PULL ROLL-OFF DUMP TRAILER**  
17,500# GVWR

**13BN | ROLL-OFF DUMP BIN (SOLD SEPARATELY)**  
13 Cubic-Yard Capacity



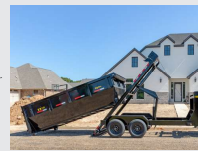
### THE RIGHT TOOL FOR THE JOB

Unlike some competitive products, the Big Tex Roll-Off Dumps are equipped with a High-Duty Cycle ComeUp Winch designed for longevity and multiple cycles each day.



### HEAVY DUTY 10-GAUGE, 4' SIDES

Our Roll-Off dump bins are built tough with durable 10-gauge steel. Plus, our taller 4' side height helps keep loose materials off the road and in the bin where they belong.



### SERVICE MULTIPLE JOBS WITH A SINGLE TRAILER

You can't be everywhere at once, but thanks to our innovative Roll-Off design, your dump bins can! Quickly and easily service multiple job sites by adding additional dump bins to your fleet anytime.

# 14RD | GOOSENECK ROLL-OFF DUMP TRAILER

📏 GVWR: 15,900# 📦 EMPTY WEIGHT: 6,040# 📏 AVAILABLE LENGTHS: 14' 📏 BED WIDTH: 102" WIDE 📌 COUPLER: Gooseneck with 2-5/16" Adjustable Pipe Coupler

## BigTex TRAILERS®

www.bigtextrailers.com/dump-trailers

## SPECIFICATIONS

	14RD	14RB	16RD	16RB
HITCH TYPE	Gooseneck	Bumper Pull	Gooseneck	Bumper Pull
G.V.W.R.	15,900#	14,000#	17,500#	17,500#
G.A.W.R. (Ea. Axle)	7,000#	7,000#	8,000#	8,000#
HYDRAULICS	Power Up/Power Down	Power Up/Power Down	Power Up/Power Down	Power Up/Power Down
COUPLER	2-5/16" Round Adj. Pin (25K)	Adjustable 2-5/16" Demco EZ Latch	2-5/16" Round Adj. Pin (25K)	Adjustable 2-5/16" Demco EZ Latch
SAFETY CHAINS	3/8" Grd. 70 w/Safety Latch Hook (2ea)	3/8" Grd. 70 w/Safety Latch Hook (2ea)	3/8" Grd. 70 w/Safety Latch Hook (2ea)	3/8" Grd. 70 w/Safety Latch Hook (2ea)
JACK	Dual 12,000# Drop Leg- Side Wind	12,000# Side Wind Drop Leg	Dual 12,000# Drop Leg- Side Wind	12,000# Side Wind Drop Leg
NECK/TONGUE	10" I-Beam	Integral with Frame (8" I-Beam, 10#)	10" I-Beam	Integral with Frame (8" I-Beam, 10#)
MAIN FRAME	8" I-Beam, 10#	8" I-Beam, 10#	8" I-Beam, 10#	8" I-Beam, 10#
DUMP BODY CRMS	3" Channel, 16" Centers	3" Channel, 16" Centers	3" Channel, 16" Centers	3" Channel, 16" Centers
DUMP BODY SIDES	48" Tall	48" Tall	48" Tall	48" Tall
DUMP BODY TOP RAIL	4" x 3" Rectangular Tubing	4" x 3" Rectangular Tubing	4" x 3" Rectangular Tubing	4" x 3" Rectangular Tubing
FENDERS	10" x 72" 14 Ga. Diamond Plate Double Square Broke	10" x 72" 14 Ga. Diamond Plate Double Square Broke	10" x 72" 14 Ga. Diamond Plate Double Square Broke	10" x 72" 14 Ga. Diamond Plate Double Square Broke
AXLE	(2) 7,000# Axles w/ Quick Lubricating Hubs & Elec. Brakes	(2) 7,000# Axles w/ Quick Lubricating Hubs & Elec. Brakes	(2) 8,000# Axles Oil Bath w/ Electric Brakes	(2) 8,000# Axles Oil Bath w/ Electric Brakes
SUSPENSION	Multi-Leaf Slipper Spring w/ Equalizer	Multi-Leaf Slipper Spring w/ Equalizer	Multi-Leaf Slipper Spring w/ Equalizer	Multi-Leaf Slipper Spring w/ Equalizer
TIRE	ST235/80 R-16 Load Range E	ST235/80 R-16 Load Range E	ST215/75 R-17.5 Load Range H	ST215/75 R-17.5 Load Range H
WHEEL	16" x 6"; Black Mod, 8 Bolt	16" x 6"; Black Mod, 8 Bolt	17.5" x 6.75"; Black Mod, 8 Bolt	17.5" x 6.75"; Black Mod, 8 Bolt
FLOOR	10 Gauge Smooth Steel	10 Gauge Smooth Steel	10 Gauge Smooth Steel	10 Gauge Smooth Steel
LIGHTS	L.E.D. Stop, Turn, and Tail Clearance	L.E.D. Stop, Turn, and Tail Clearance	L.E.D. Stop, Turn, and Tail Clearance	L.E.D. Stop, Turn, and Tail Clearance
ELEC. PLUG	7-way RV	7-way RV	7-way RV	7-way RV
FINISH (PREP)	Steel is Cleaned to Ensure a Professional, Smooth Finish.	Steel is Cleaned to Ensure a Professional, Smooth Finish.	Steel is Cleaned to Ensure a Professional, Smooth Finish.	Steel is Cleaned to Ensure a Professional, Smooth Finish.
FINISH	Superior Quality Finish is Applied for a Highly Decorative and Protective Finish.	Superior Quality Finish is Applied for a Highly Decorative and Protective Finish.	Superior Quality Finish is Applied for a Highly Decorative and Protective Finish.	Superior Quality Finish is Applied for a Highly Decorative and Protective Finish.

## OPTIONAL EQUIPMENT

Category	Code	Description
COUPLER	AP	Adjustable Pintle in Channel ILO Coupler
JACKS	12KHJ	12,000# Elec/Hyd. Jack BY Stillwell™
TIRE/WHEEL	SP	Spare Tire (ST235/80 R-16 LR-E)
TIRE/WHEEL	TU	Tire Upgrade (ST235/80 R-16 LR-G)
TIRE/WHEEL	SPU	Spare Tire Upgrade (ST235/80 R-16 LR-G)
POWER	WRMT	Wireless Remote for Hoist

## WEIGHTS & CAPACITIES

	14RD	14RB	16RD	16RB
LENGTH	14'	14'	14'	14'
EMPTY WEIGHT	6,040#	5,590#	6,040#	5,590#
PAYLOAD	9,860#	8,410#	11,460#	11,910#
BOX CAPACITY	13 Cubic Yards	13 Cubic Yards	13 Cubic Yards	13 Cubic Yards

\*All Weights include Bin